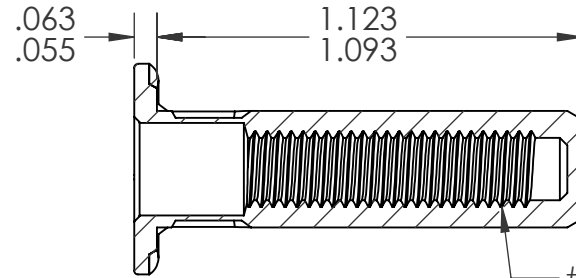
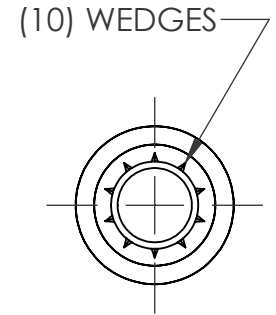
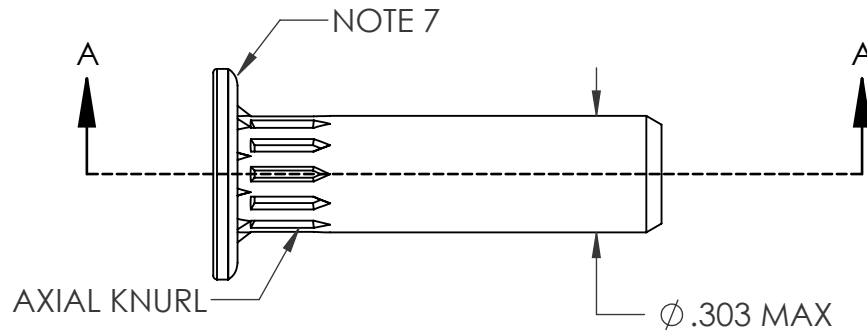
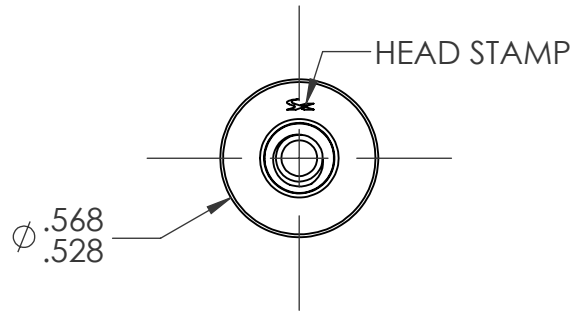


REVISIONS				
REV.	DESCRIPTION	DATE	ECN	INITIAL
A	INITIAL RELEASE	03/05/21	3794	FCG
B	UPDATE BODY DIAMETER	09/07/22	4105	MRA



#8-32 UNC 2B  
PER ASME B1.1  
MINOR DIA.: .130 - .139

SECTION A-A

NOTE:

1. GRIP RANGE: .059 - .118
2. HOLE SIZE: .300 +.006/- .000 AFTER ALL APPLIED FINISHES.
3. INSTALLED LENGTH: 0.951 MAX.
4. INSTALLED THREAD DEPTH: .787 MIN. IN MIN. GRIP
5. LUBRICATION: NONE
6. INSTALLATION TOOL: SPIN-PULL
7. DEPOSIT PLASTISOL ALONG OUTER GROOVE OF THE HEAD. SEAL MUST NOT CONTACT WEDGES.

**PROPRIETARY AND CONFIDENTIAL**

THIS DRAWING, AND THE INFORMATION CONTAINED HEREIN, ARE THE PROPERTY OF SHEREX AND ARE NOT TO BE USED IN ANY MANNER DETRIMENTAL TO THE INTEREST OF THE COMPANY.  
SHEREX SOLUTIONS RESERVES THE RIGHT TO REVISE PART/DRAWING WITHOUT NOTICE.

		UNLESS OTHERWISE SPECIFIED:	NAME	DATE	
		DIMENSIONS ARE IN INCHES TOLERANCES: ANGULAR: MACH $\pm$ 1 BEND $\pm$ 1 TWO PLACE DECIMAL $\pm$ .01 THREE PLACE DECIMAL $\pm$ .002	DRAWN	FCG	
		INTERPRET GEOMETRIC TOLERANCING PER: ASME Y14.5M-1994	CHECKED		
		MATERIAL	ENG APPR.	CL	03/05/21
		C1008/C1010	MFG APPR.		
		FINISH	Q.A.		
		ZINC PLATE CLEAR TRIVALENT CHROMATE PER SFS-01-001, SC1	COMMENTS:	E-mail: info@sherex.com www.sherex.com Phone: 866-474-3739 Fax: 716-875-0358	
NEXT ASSY	USED ON		TITLE: <b>#8-32 LARGE FLANGE CLOSED END OPTISERT W/ SEAL</b>		
APPLICATION		DO NOT SCALE DRAWING	SIZE DWG. NO.	REV	
			<b>A</b> OPT2-0832-118BS	B	
			SCALE: 2:1	WEIGHT:	SHEET 1 OF 1